

BYTESCREEN

CONNECT • DETECT • PROTECT

BT-NMS Network Management System

Portfolio Overview



Collapse multiple platforms in a Unified Network as a Service stack



- Bandwidth Aggregator
- Firewall
- WAN Routing
- LAN Monitor
- IDAM
- IPS/IDS
- WLAN Mgmt
- Anti-Virus
- End-Point Security
- Threat Intel / DDoS
- EPBAX

BT-SDWAN

Worlds most secure Patent applied, True aggregation & dynamic rotation-based Solution

WAN key

BT-WAN/ LAN Mgmt

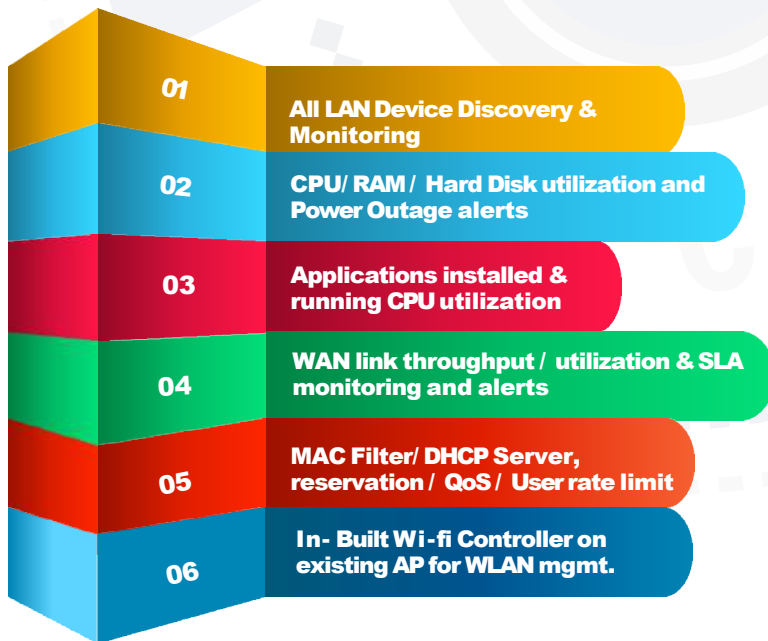
A complete remote hands solution for integrated LAN devices, WAN Links and Application monitoring with single pane of glass for alerts

BT-SECURE


Integrated Stateful and Next gen firewall with end-point security solution

WAN/LAN Management Solution

1




Service Components



Orchestrator Deployed on VM at central DC

- Web Interface based Policy Configuration manager
- Supports in cloud or on-prem deployment with role-based access
- Connects to CPE for monitoring
- Provides single pane of glass across the network for LAN- WAN monitoring
- Proactive configurable alerts



CPE at branch 5 Port 2 SIM

- Zero touch deployment with no GUI / CLI and
- Tunnel-less communication to Orchestrator via TLS 1.3 based REST API connectivity
- "Dying Gasp" for power outage warning



BYTESCREEN Managed LAN Monitored Elements for visibility & alerts



Hardware

Motherboard Type Sample:
Intel64 Family 6 Model 78 Stepping 3
AT/AT COMPATIBLE



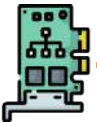
Software

OS Type | Patch Installed | Browser details |
Application Name, installed date, Version
and Patches



System Uptime & Host NAME

Up since | Last outage | Tickets data | Periodic
summary & Alerts. | Host Name Configured on
device



Interface Detection

Loop back details	Interface Name, Packets Count, Up/down and enable status
PPPoE details	Encapsulation Type, MTU and Speed, Up/down status, Packet Count
Physical Ethernet Port	Port Type, Port Controller details, MAC address, Speed, MTU, Packet count, Up/down status
Bluetooth	Bluetooth device type, Speed, MTU, Admin status, Operational Status
L2TP and PP2P	Tunnel Types, Packet Count, Enable status, Errors, Up/down status



Adapters & Drivers

Physical Interface	Type of drivers, MTU, Speed, admin status, up time, packet count, physical address connected
Bluetooth Interface	Bluetooth Device (Personal Area Network)-Npcap Packet Driver
Wi-Fi Adapter Details	Type of adapter, Encapsulation type, MTU, Speed, MAC address, Up/down status, Packet count
Wi-Fi virtual adapter details	Microsoft Wi-Fi Direct Virtual Adapter #2-WFP 802.3
Debug Network Adapter	Microsoft Kernel Debug Network Adapter



Process & Storage Details

System 32	Run Status, CPU used, RAM used
Operating System	Run Status, CPU used, RAM used
Registry	Run Status, CPU used, RAM used
Applications	Run Status, CPU used, RAM used
Hard disk	Type of Hard disk, Capacity used and free
Physical Memory	Type of RAM, Capacity
CPU details	CPU Type, Number of processor, Clock speed

BYTESCREEN Managed LAN Monitored Elements for visibility & alerts

2

01

NO GUI / CLI & Location Anomaly detection

Enables rapid deployment and with basic L0 engineer at branch. Complete security from local login by anyone. If device is moved a location anomaly alert is generated (non GPS based)

02

COMPATIBLE WITH OTHER DEVICES

Compatible with existing firewalls, switches or WAN solutions. It can monitor WAN & LAN without any additional configuration changes.

03

MAKE IN INDIA

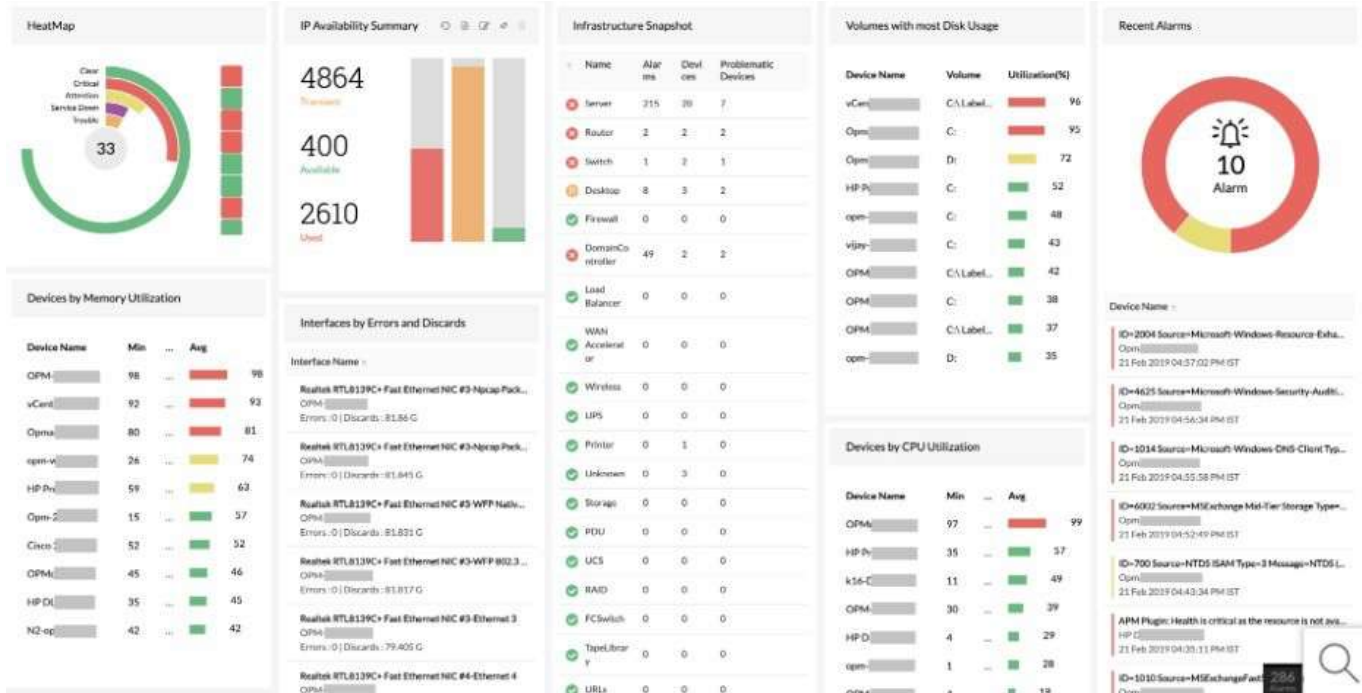
Proudly Make in India solution offers complete peace of mind and compliance with Class I norms. Software is embedded Linux hardened and crash free.

04

WIFI MANAGERMENTS & AP's

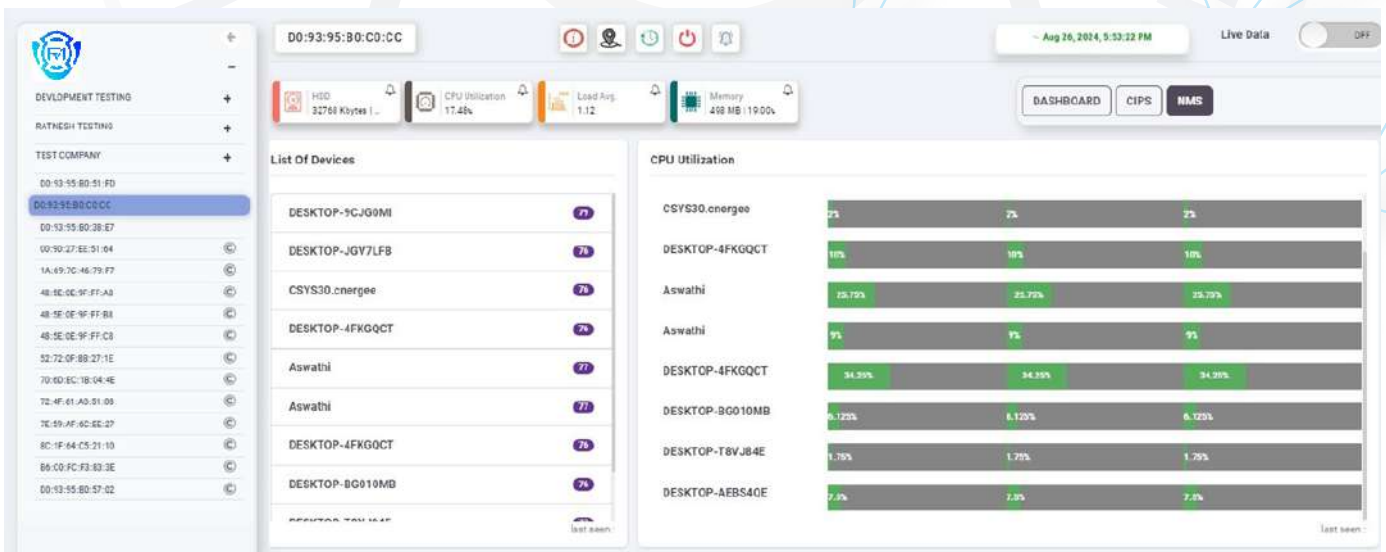
Our Managed WiFi Access Point Controller and WiFi Manager enables IT staff to manage multi-site, multi-tenancy networks.

Our Friendly GUI : Summary Dashboard with rich data



Our Friendly GUI : Drill down at Branch level for user specific data

3



Our Friendly GUI : Auto-discover LAN connected devices

Sr.No	MAC Address	Vendor Name	IP Address	User Name	Types	Status	Signal	Up-Time/Down-Time	Device Type	Send Alert	Operation
1	00:17:61:10:18:a0	Private	172.16.140.108		Wired	UP	-	15-Dec-2023 19:13:06	Official/Personal	<input type="checkbox"/>	
2	4c:d5:77:d2:eb:77	CHONGQING FU...	172.16.140.118		WIFI [2G]	UP	Poor	20-Dec-2023 12:44:06	Official/Personal	<input type="checkbox"/>	
3	f4:02:23:81:08:11	PAX Computer Te...	172.16.140.173		WIFI [2G]	UP	Poor	20-Dec-2023 11:59:05	Official/Personal	<input type="checkbox"/>	
4	4c:d5:77:7b:d5:31	CHONGQING FU...	172.16.140.231		WIFI [2G]	UP	Poor	20-Dec-2023 10:04:03	Official/Personal	<input type="checkbox"/>	
5	6e:72:62:45:db:f2		172.16.140.104		--NA--	DOWN	-	20-Dec-2023 10:02:02	Official/Personal	<input type="checkbox"/>	
6	4c:d5:77:d2:c7:3f	CHONGQING FU...	169.254.52.26		--NA--	DOWN	-	20-Dec-2023 09:37:07	Official/Personal	<input type="checkbox"/>	
7	00:17:c8:d9:bc:bd	KYOCERA Displa...	172.16.140.201		--NA--	DOWN	-	20-Dec-2023 09:37:06	Official/Personal	<input type="checkbox"/>	
8	12:94:1d:0a:a1:2b		172.16.140.117		--NA--	DOWN	-	16-Dec-2023 20:58:08	Official/Personal	<input type="checkbox"/>	
9	66:67:68:be:07:eb		172.16.140.141		--NA--	DOWN	-	14-Dec-2023 14:14:06	Official/Personal	<input type="checkbox"/>	
10	a0:29:42:7d:54:ec	Intel Corporate	172.16.140.214		--NA--	DOWN	-	13-Dec-2023 18:27:07	Official/Personal	<input type="checkbox"/>	
11	8e:53:15:91:84:9e		172.16.140.221		--NA--	DOWN	-	13-Dec-2023 17:13:06	Official/Personal	<input type="checkbox"/>	

4

Our Friendly GUI : Traffic Flow Analyzer connected devices

MAC	LAN Port	Source IP	Source Port	Destination IP	Destination Port	Protocol	TX (bytes) +	RX (bytes) +	TX (speed) +	RX (speed) +
0a:8b:34:22:01:77	eth0.5	192.168.23.6	50197	CBS SERVER	9000	tcp	10547	27064	377	969
0a:8b:34:22:01:77	eth0.5	192.168.23.6	50215	CBS SERVER	9000	tcp	9781	8549	350	306
0a:8b:34:22:01:77	eth0.5	192.168.23.6	50213	CBS SERVER	9000	tcp	8099	5133	290	183
0a:8b:34:22:01:77	eth0.5	192.168.23.11	50984	CBS SERVER	9000	tcp	4932	5973	176	214
0a:8b:34:22:01:77	eth0.5	192.168.23.6	50214	CBS SERVER	9000	tcp	7104	2745	254	98
0a:8b:34:22:01:77	eth0.5	192.168.23.6	50216	CBS SERVER	9000	tcp	5407	2075	193	74
0a:8b:34:22:01:77	eth0.5	192.168.23.6	50217	CBS SERVER	9000	tcp	4533	1738	162	62
0a:8b:34:22:01:77	eth0.5	192.168.23.15	57011	CBS SERVER	9000	tcp	2029	2993	72	107
0a:8b:34:22:01:77	eth0.5	192.168.23.13	51210	CBS SERVER	9000	tcp	1290	600	46	21
0a:8b:34:22:01:77	eth0.5	192.168.23.10	54507	CBS SERVER	9000	tcp	1184	695	42	24

Number of records : rows

Navigation: << 1 2 3 4 5 6 7 8 9 10 ... 16 >>

CLOSE

Our Friendly GUI : MAC Filter restricts device logins

WLAN Configuration

WLAN Details **Allow MAC** WiFi Scan

MAC Filter

Mac Address Mac Name SAVE

S.N.	MAC Address	Name	Operations
1	e8:6f:38:7b:53:47	sanket	
2	84:7b:57:de:dc:b7	BAN367293	
3	84:7b:57:e0:21:3f	BAN363531	
4	84:7b:57:df:bc:8b	BAN370894	
5	a0:59:50:e2:1e:d1	BAN390027	

Our Friendly GUI : Location Anomaly detection prevents device misuse

5

Location Anomaly Detection

Current Status Disable Enable

Sr.No.	Risk Score	Status	Action
1	5	New SIM detected	<input type="radio"/> Approved <input type="radio"/> Denied SUBMIT
2	4	Location change	<input type="radio"/> Approved <input type="radio"/> Denied SUBMIT
3	4	Location change	<input type="radio"/> Approved <input type="radio"/> Denied SUBMIT
4	4	Location change	<input type="radio"/> Approved <input type="radio"/> Denied SUBMIT
5	4	Location change	<input type="radio"/> Approved <input type="radio"/> Denied SUBMIT
6	4	Location change	<input type="radio"/> Approved <input type="radio"/> Denied SUBMIT
7	4	Location change	<input type="radio"/> Approved <input type="radio"/> Denied SUBMIT
8	4	Location change	<input type="radio"/> Approved <input type="radio"/> Denied SUBMIT

History

#	Risk Score	Status	By	Date modified
1	5	New SIM detected		
2	4	Location change		
3	4	Location change		
4	4	Location change		

Our Friendly GUI : WLAN monitoring dashboard (if used as AP controller)



Our Friendly GUI : Remote Diagnostics of network elements

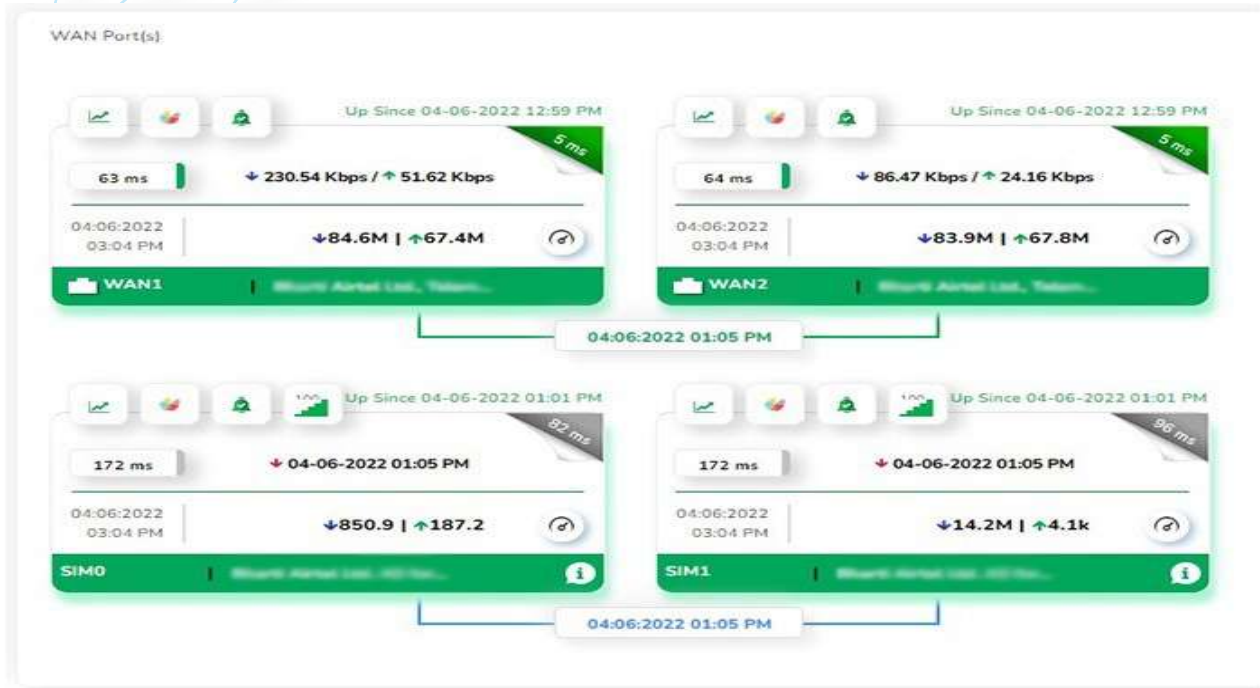
6

The IPCONFIG tool provides detailed network configuration for selected interfaces. The output for interface eth0 is as follows:

```
CB:F8:F9:C4:B5:68\S0SKV>
eth0 Link encap:Ethernet HWaddr C0:F8:F9:C4:B5:68
inet addr:103.125.161.182 Bcast:103.125.161.183 Mask:255.255.255.248
inet6 addr: fe80::c2fb:f9ff:fec4:b568/64 Scope:Link
UP BROADCAST RUNNING MULTICAST MTU:1500 Metric:1
RX packets:24668566 errors:0 dropped:0 overruns:0 frame:0
TX packets:23463777 errors:1 dropped:0 overruns:0 carrier:0
collisions:0 txqueue:1000
RX bytes:11461965596 (10.6 GiB) TX bytes:2860718680 (2.6 GiB)

eth1 Link encap:Ethernet HWaddr C0:F8:F9:C4:B5:67
inet addr:172.16.247.1 Bcast:172.16.247.7 Mask:255.255.255.248
inet6 addr: fe80::c2fb:f9ff:fec4:b567/64 Scope:Link
UP BROADCAST RUNNING MULTICAST MTU:1500 Metric:1
RX packets:1395309 errors:0 dropped:0 overruns:0 frame:0
TX packets:5805693 errors:0 dropped:0 overruns:0 carrier:0
collisions:0 txqueue:1000
```

Our Friendly GUI : WAN Monitoring to determine Throughputs & SLA's



Enables 3rd Party AP Control enabling Optimal reuse of existing infra

7

Features & Benefits

- Remotely managed service
- Improved User Experience
- Deployment
 - ✓ Pre-configured Aps
 - ✓ Reduced deployment time
- Centralized Management:
 - ✓ Single cloud- based interface
 - ✓ Simplified network management
- Easy Visibility
 - ✓ Status check (Online / Offline)
 - ✓ Users Connected Count
 - ✓ MAC Model & IP details
- Self- diagnosis service
- Multi- Brand AP Controller
 - ✓ Supports ~2000 brands of models

The screenshot shows a 'WLAN Group Config' interface. At the top, there are fields for 'WLAN Group Name' (New WLAN Group) and 'Device List' (D845E9D73F09, D445E9B73F08, D445EBB72146). Below this is a 'SINGLE AP Configuration' section with three sub-sections: 'Main AP Configuration', 'Virtual AP Configuration 1', and 'Virtual AP Configuration 2'. Each sub-section has fields for Status (Enable), SSID (e.g., WLAN_Beta_1), VLANID (0), Wireless Security (WPA_PSK/WPA2_PSK), PSK Key (12345678), and Hide SSID (Show). A 'SUBMIT' button is at the bottom right.

Our Friendly GUI : MAC Filter restricts device logins

WLAN Configuration

WLAN Details **Allow MAC** WiFi Scan

MAC Filter

Mac Address Mac Name SAVE

S.N.	MAC Address	Name	Operations
1	e8:6f:38:7b:53:47	sanket	
2	84:7b:57:de:dc:b7	BAN367293	
3	84:7b:57:e0:21:3f	BAN363531	
4	84:7b:57:df:bc:8b	BAN370894	
5	a0:59:50:e2:1e:d1	BAN390027	

Our Friendly GUI : Location Anomaly detection prevents device misuse

8

Location Anomaly Detection

Current Status Disable Enable

Sr.No.	Risk Score	Status	Action
1	5	New SIM detected	<input type="radio"/> Approved <input type="radio"/> Denied SUBMIT
2	4	Location change	<input type="radio"/> Approved <input type="radio"/> Denied SUBMIT
3	4	Location change	<input type="radio"/> Approved <input type="radio"/> Denied SUBMIT
4	4	Location change	<input type="radio"/> Approved <input type="radio"/> Denied SUBMIT
5	4	Location change	<input type="radio"/> Approved <input type="radio"/> Denied SUBMIT
6	4	Location change	<input type="radio"/> Approved <input type="radio"/> Denied SUBMIT
7	4	Location change	<input type="radio"/> Approved <input type="radio"/> Denied SUBMIT
8	4	Location change	<input type="radio"/> Approved <input type="radio"/> Denied SUBMIT

History

#	Risk Score	Status	By	Date modified
1	5	New SIM detected		
2	4	Location change		
3	4	Location change		
4	4	Location change		

.....

www.bytescreentech.com

.....

BYTESCREEN Tech Pvt Ltd stands firm in our mission to redefine the landscape of networking solutions through innovation, reliability, and customer-centricity. We are committed to pushing the boundaries of technology to deliver products and services that not only meet but exceed the evolving needs of our clients. As we continue to evolve & grow, our dedication to excellence remains unwavering. We invite you to explore our comprehensive range of networking solutions, tailored to empower businesses of all sizes and industries to thrive in the digital era. Whether you're seeking robust security measures, seamless connectivity, or advanced management tools, BYTESCREEN Tech is here to support your journey towards success.

Contact Details:

For inquiries, collaboration opportunities, or to learn more about how BYTESCREEN Tech can elevate your network infrastructure, please don't hesitate to reach out to us.

www.bytescreentech.com

